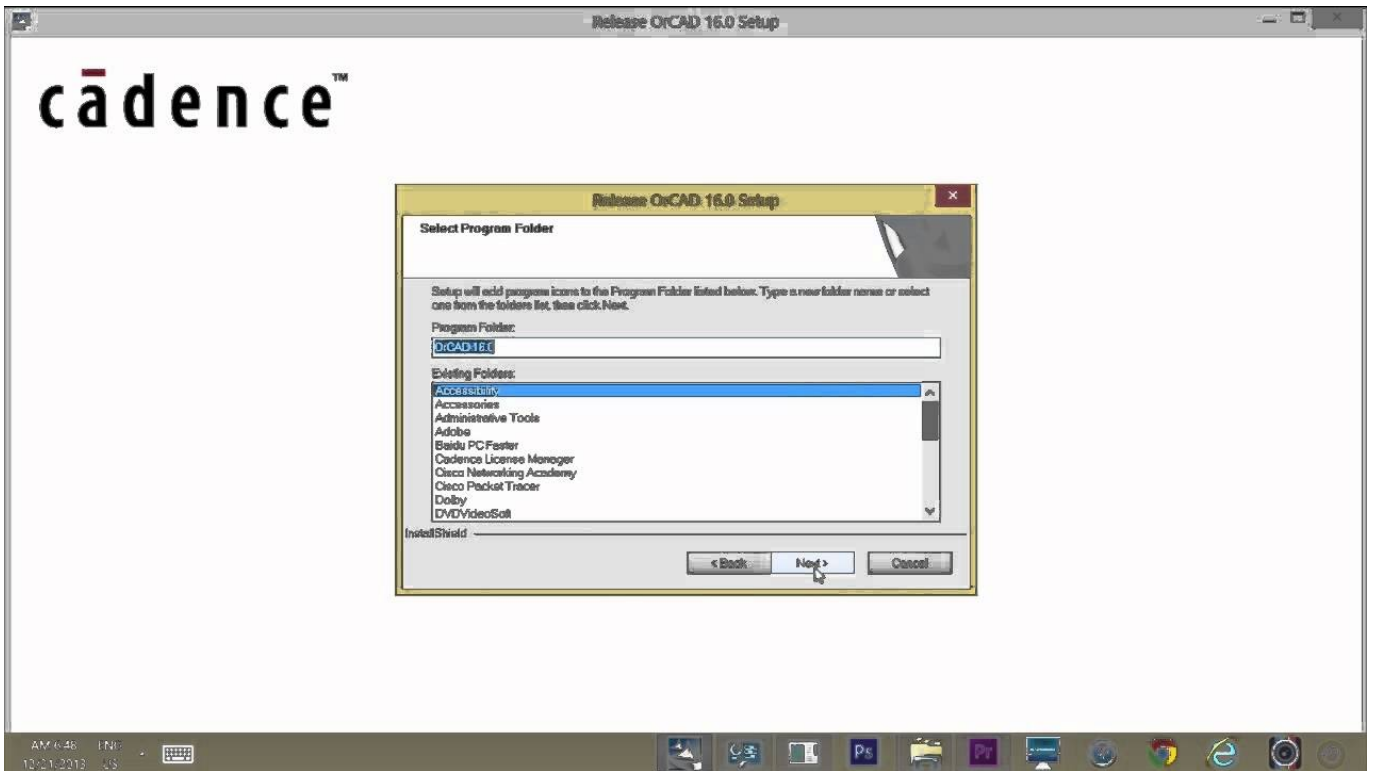


---

## Orcad 16.6-torrent.rar



**DOWNLOAD:** <https://byltly.com/2ilf7i>



Simulate using OrCAD/Allegro FREE Remove (or Add) read restrictions to perform simulation and validation with respect to physical part. • To check the read restrictions, perform a simulation and then review the physical result. Note that the page may not match the physical model exactly. • Click on the "+" or "-" button at the bottom of the Physical Viewer window to toggle between the model on the left and the physical view on the right. • Check the boxes for the read restrictions as required. Click OK and then save to close. How do I configure OrCAD/Allegro? • Click on the OrCAD/Allegro icon, labeled "OrCAD/Allegro" in the toolbar. • Click on the "+" or "-" button on the bottom right of the Configuration window. • To configure read restrictions for the entire sheet, click "ORCA/Allegro" and then "Check All Boxes" and then click on "OK". • To configure read restrictions for a sub-sheet, click "ORCA/Allegro" and then "Check All Boxes" for the sub-sheet. To remove a read restriction click "X".

---

To add a read restriction click "+". To remove an existing read restriction click "-". Click OK and then save. What are the difference between the Add, Remove and Replace functions? What is the difference between the "Add" and "Replace" functions? The "Add" function adds read restrictions to a whole sheet or sub-sheet. The "Replace" function replaces read restrictions that are already in the sheet. The "Replace" function should be performed when adding a read restriction. You should not replace an existing read restriction with the "Replace" function. Can I add read restrictions when I'm working in OrCAD/Allegro? Yes, you can add read restrictions while working in OrCAD/Allegro. How do I add read restrictions while working in OrCAD/Allegro? On the first sheet or sub-sheet you wish to add read restrictions, click "ORCA/Allegro" and  
82157476af

[Linguistica Generale Gobber Morani Pdf Download](#)  
[Odone Belluzzi Scienza Delle Costruzioni Pdf 13](#)  
[serial mscad pro](#)